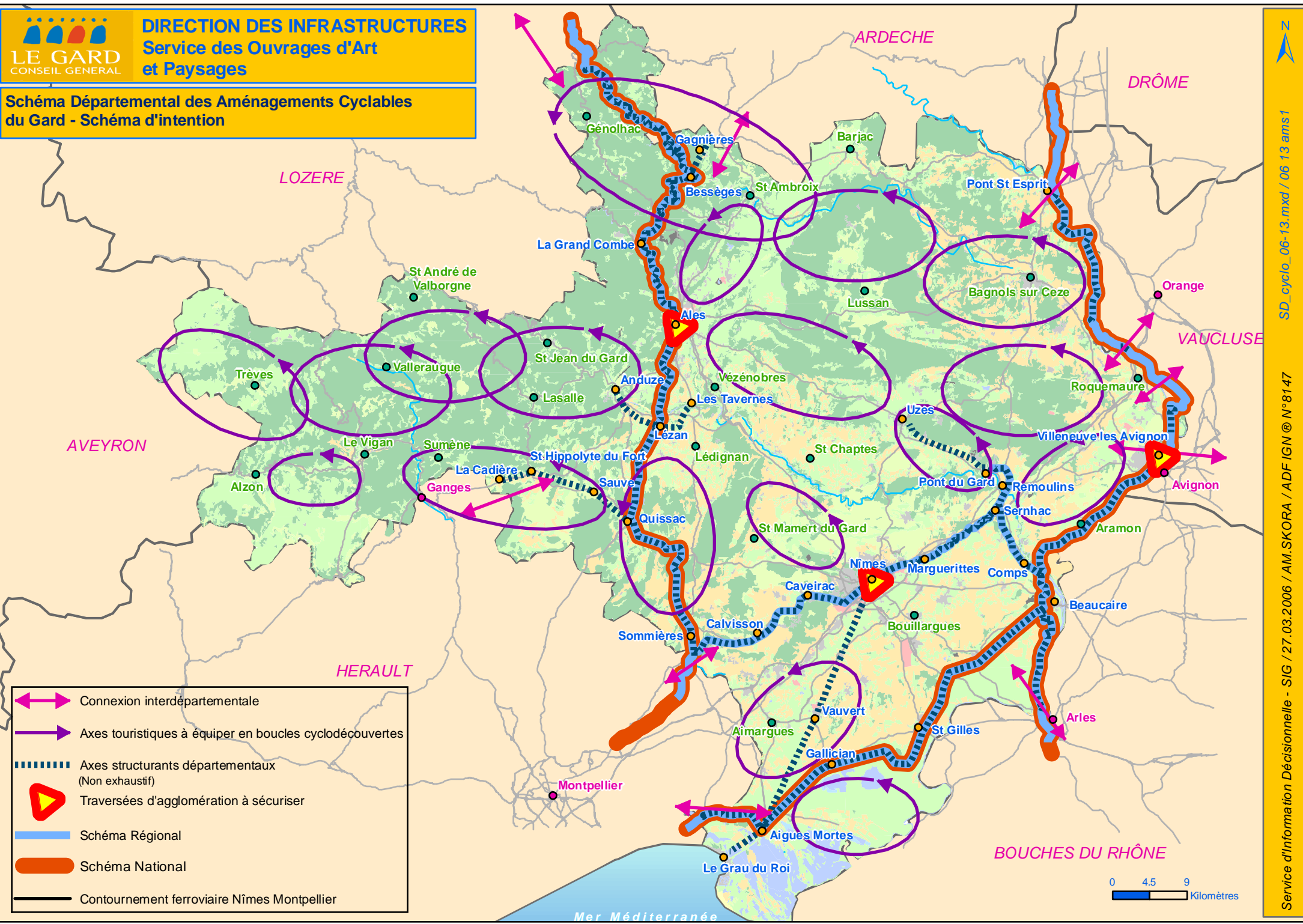




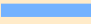




Schéma Départemental des Aménagements Cyclables  
du Gard - Schéma d'intention



-  Connexion interdépartementale
-  Axes touristiques à équiper en boucles cyclodécouvertes
-  Axes structurants départementaux (Non exhaustif)
-  Traversées d'agglomération à sécuriser
-  Schéma Régional
-  Schéma National
-  Contournement ferroviaire Nîmes Montpellier

